

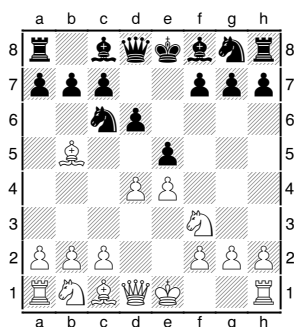
Gungahlin Junior Chess Club

Pins and Things

One of the most common ideas in playing chess is the **Pin**. The Pin is where one of your pieces attacks an enemy piece, which has a more valuable piece behind it.

King Pin

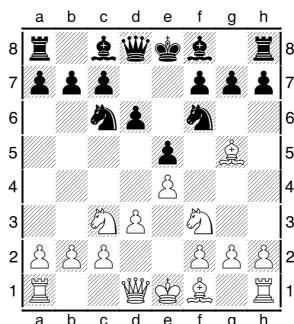
When a piece is pinned, sometimes it can still move, while other times it cannot.



In the above diagram the Black Knight on c6 is pinned. If the Knight moves then the Bishop on b5 would be attacking the Black King. As you cannot put yourself in check then the Black Knight cannot move at all. Chess players sometimes say “the knight is pinned against the king”. If a piece cannot move because it is pinned, then it can become very easy to capture. This is because it cannot run away if attacked. In the above position White is planning to play the pawn to d5, attacking the pinned knight.

Other Pins

Sometimes a pinned piece is able to move, but doesn't want to. This is because the piece behind it is more valuable.



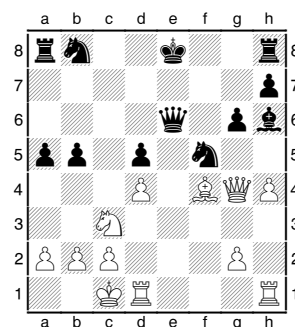
A common example is when a bishop attacks a

knight, and if the knight moves, the bishop could capture the queen behind it. In the above diagram the knight on f6 is pinned against the queen on d8. Of course the knight is able to move, but it might not be the smartest move.

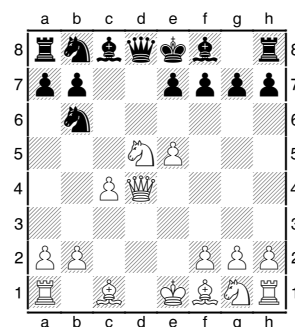
Why Pin?

There are two main reasons for pinning a piece. The first idea is to stop it moving. If a piece cannot move then it is a less effective member of your army.

The second reason is to try and capture it with a weaker piece. Sometimes the weaker piece is the piece doing the pinning, while other times the weaker piece is part of a double attack.



Here it is White's move and after Rhe1, the Black Queen is pinned against the King. Black has a couple of choices here (Qxe1, Ne3 or Qe7) but even then the Queen cannot be saved.



Here the Knight on d5 is pinned against the Queen on d4. If the Knight moves then the Black Queen captures the White one. Back now moves the pawn to e6, attacking the helpless Knight. Next move the pawn will capture the Knight, leaving Black ahead on material.