

Gungahlin Junior Chess Club

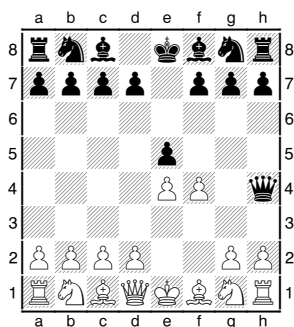
Quiz 1

This quiz covers the first 3 handouts from chess coaching. There are 10 questions, covering the topics of Game Recording, Check and Checkmate, and Material. Each question has 3 possible answers, all you need to do is circle the answer you think is right.

Question 1: What is the symbol for a Knight?
 (a) K (b) N (c) Kt

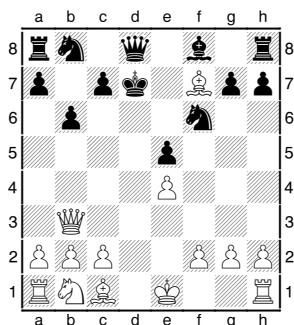
Question 2: What does the move Nxe5 mean?
 (a) The Knight moves to e5 (b) The Knight moves to e5 and captures whatever is there (c) The piece on e5 captures the Knight

Question 3: Look at the following diagram



What moves will get White out of check?
 (a) Ke2 or g3 (b) Nf3 (c) None. White is checkmated

Question 4: Which move is the checkmate move?



(a) Be6 (b) Qe6 (c) Qb5

Question 5: Play through the following moves
 1.e4 c6 2.d4 d5 3.Nc3 dxe4 4.Nxe4 Nd7 5.Qe2

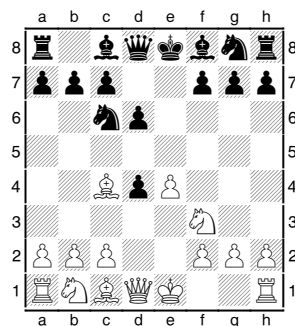
h6 6.Nd6 What is the outcome of the game?
 (a) White has won by checkmate (b) Black will capture the knight on d6 (c) The position is even.

Question 6: Play through this game. 1.e4 e5 2.Nf3 Nc6 3.Bc4 Nd4 4.Nxe5 Qg5 5.Nxf7 Qxg2 6.Rf1 Qxe4 7.Be2 Nxc2 8.Qxc2 Qxc2 Where did Black miss the checkmate?
 (a) 6 ... Qxf1 (b) 8 ... Qxe2 (c) 7 ... Nf3

Question 7: Which piece is worth more, a Rook or a Knight?
 (a) Rook (b) Knight (c) They are the worth the same

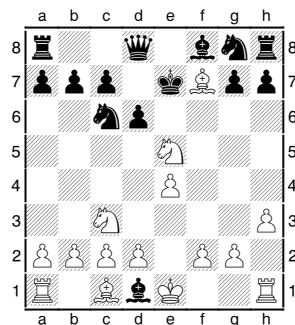
Question 8: What would you rather have on your side, a Queen or a Rook+Bishop+Pawn?
 (a) Rook+Bishop+Pawn (b) Queen (c) It does not matter

Question 9: Look at this position. What capture would you make?



(a) Bxf7 (b) Nxd4 (c) Qxd4

Question 10: What is the best move in this position?



(a) Nd5 (b) Nxc6 (c) Kxd1