

Gungahlin Junior Chess Club

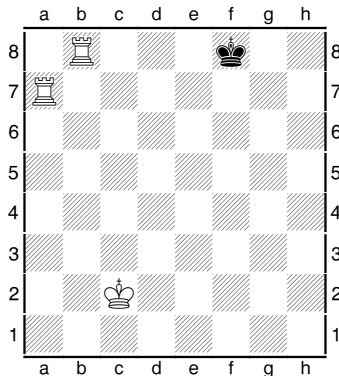
Playing for Checkmate

Of course it is not enough just to capture your opponents pieces. You still have to find a way of checkmating your opponent. Here you will see some of the most common ways of checkmating your opponent, once they are unable to defend themselves.

However, it is not enough to look at these checkmates and hope they turn up in your game. You have to look at ways of making them happen. To be a good chessplayer you need to take ideas from one position and use them in another.

Electric Fence

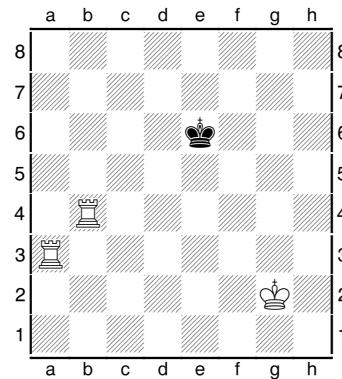
The goal of the Electric Fence checkmate is to force the king to the edge of the board using your two rooks (or rook and queen). Here is a diagram of the final position.



The reason it is called the Electric Fence is that each rook takes turns in stopping the king moving away from the edge. Like an Electric Fence the rook on a7 prevents the Black king from moving to the 7th rank. And this means the king has been checkmated by the rook on b8.

But how do we get to this position?

The simplest way is to start by moving your rooks to the two files furthest away from the enemy king. The ideal setup is one rook on the edge of the board, and the other on the file next to it. You then move one rook down to the rank below the king, keeping it closer to the end of the board than it wants to be. Then bring the other rook down to give check. Move by move you can push the king to the end of the board until finally it has no more room to retreat.

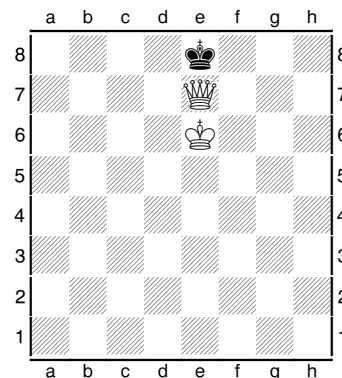


In this position White wins as follows

1.Ra5 Cutting off the Black king from the bottom of the board. **Kd6** **2.Rb6+** **Kc7** Now **3.Ra7+** would be a mistake as the King would capture the rook on b6. In this case the rooks move themselves to the other side of the board. **3.Rg6** **Kb7** **4.Rh5** Now the Black king cannot catch the rooks as they are too far away. **Kc7** **5.Rh7+** **Kd8** **6.Rg8#**

The Royal Couple

When you have a King and Queen against just a King, you must use both pieces to checkmate. There are a couple of different ways to give checkmate in this situation but this is the most common.



The Queen is able to both attack the Black King in this position, as well as attack all the possible squares the King can move to. However, the Queen cannot protect itself and needs the King to support it, so the Black King cannot capture it. What you should aim for is to get your King in front of the enemy King and then put the Queen between the two.